



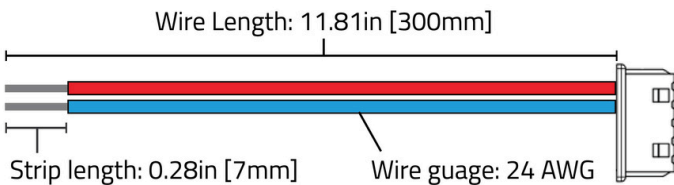
Control Protocol: Wireless Casambi BLE

Wiring Diagrams



Figure 1 – APT5-VWC-M2 Wiring Diagram

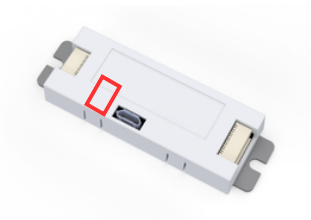
Thermal Feedback: Equipped with a smart temperature sensor system, the controller gradually adjusts current to regulate temperature, preventing overheating and ensuring stable operation and component longevity. Only use with Arkalumen's integrated thermal feedback LED modules, otherwise leave thermal feedback unconnected.



Function	Wire Color
DC IN +	Red
DC IN -	Blue

Please contact Arkalumen if you would like a different length of cable

Figure 2 – Wireless Cable Assembly



When designing and placing the embedded antenna in its enclosure, it is crucial to ensure that no metal is placed near the antenna area, both above and below it. The presence of metal in close proximity to the module can significantly degrade its RF performance.

Figure 3 – Embedded Antenna Location

APT controller acts as a floating device as per ANSI E1.11 – 2024. Use only with a driver with an output not referenced to earth or protective ground (ie. isolated output)